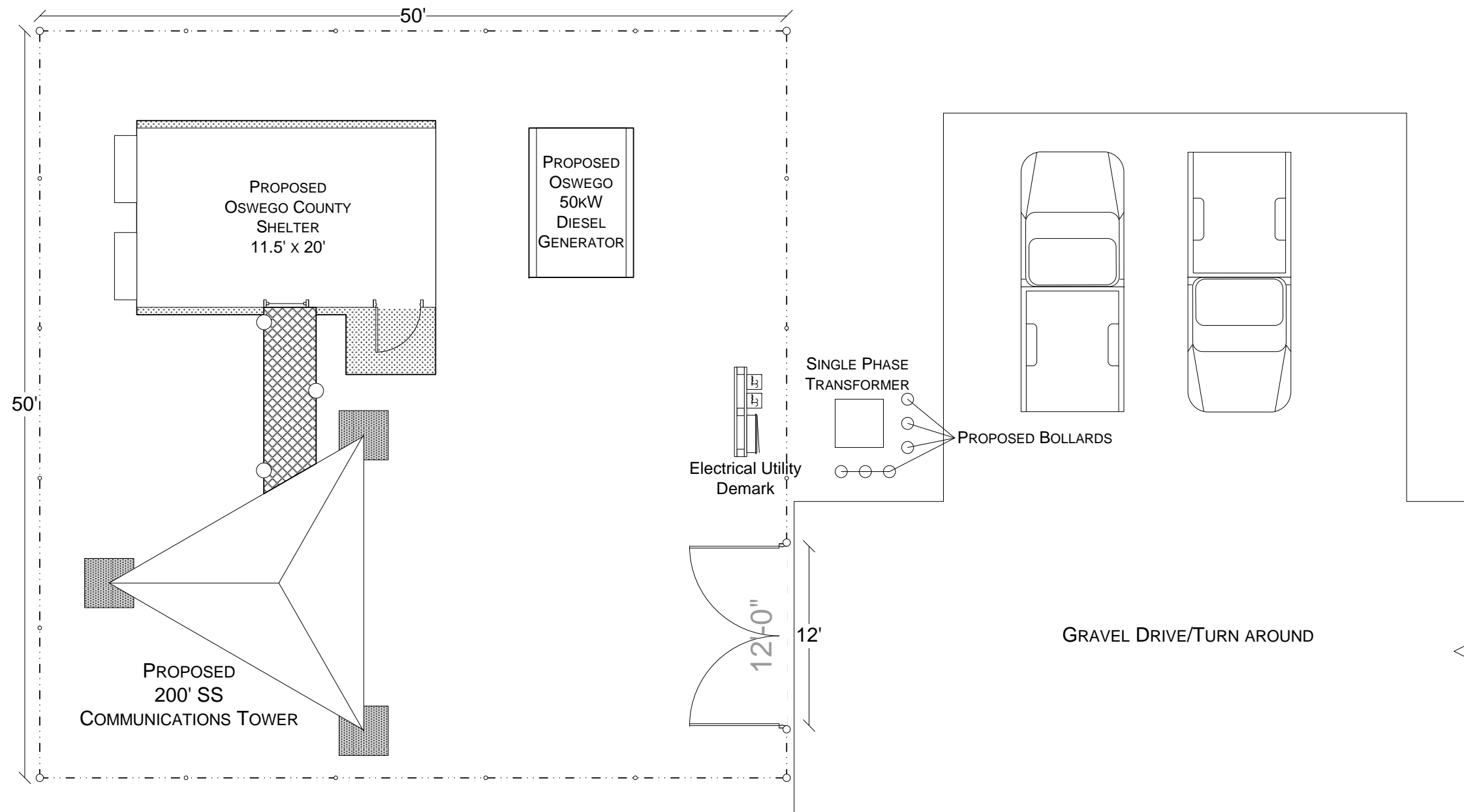


FENCED COMPOUND SIZE
50' x 50'



LANGONE & ASSOCIATES
87 EMERALD COURT
TEWKSBURY, MASSACHUSETTS 01876
(978) 851-0198

DRAWN BY: SEAN M. SPARKS

CUSTOMER:

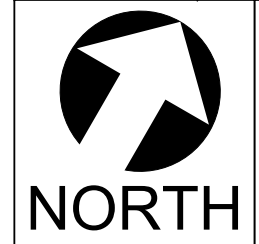
OSWEGO COUNTY
DEPARTMENT OF EMERGENCY
COMMUNICATIONS

INTEROPERABLE COMMUNICATIONS
PROJECT
APPENDIX 1

NAME	GENERIC SITE PLAN
DATE:	APRIL 12, 2010
SITE DATA:	GENERIC 200' SS
SCALE:	1/8" = 1'
PAGE SIZE:	11" x 17"
SHEET:	1 OF 8
SHEET DATA	GENERAL SITE DETAIL
DRAWING #:	2010-0001

REVISION HISTORY:

APRIL 17, 2010	LAYOUT CHANGE
APRIL 19, 2010	ADD SHEETS 2-6
APRIL 22, 2010	ADD SHEETS 7-8



LANGONE & ASSOCIATES

87 EMERALD COURT
TEWKSBURY, MASSACHUSETTS 01876
(978) 851-0198

DRAWN BY: SEAN M. SPARKS

CUSTOMER:

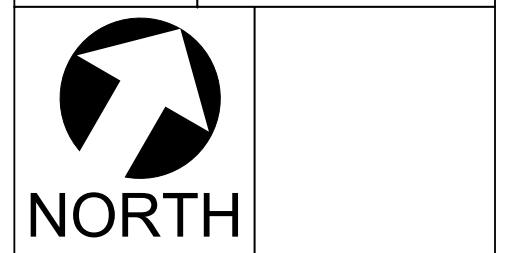
OSWEGO COUNTY
DEPARTMENT OF EMERGENCY
COMMUNICATIONS

INTEROPERABLE COMMUNICATIONS
PROJECT
APPENDIX 1

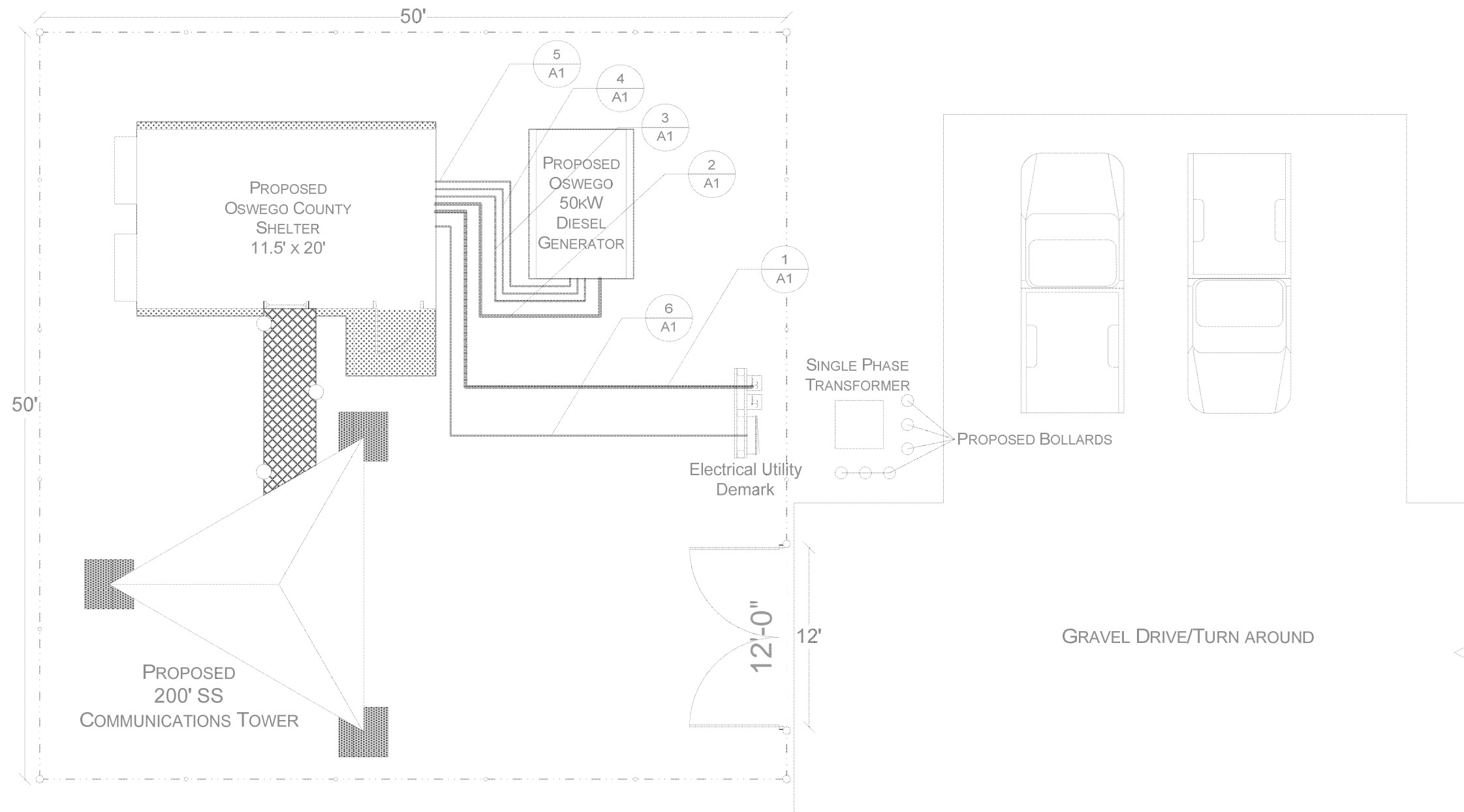
NAME	GENERIC SITE PLAN
DATE:	APRIL 12, 2010
SITE DATA:	GENERIC 200' SS
SCALE:	1/8" = 1'
PAGE SIZE:	11" x 17"
SHEET:	2 OF 8
SHEET DATA	UTILITY DETAIL
DRAWING #:	2010-0001

REVISION HISTORY:

APRIL 19, 2010	ADD UTILITY DETAIL



FENCED COMPOUND SIZE
50' x 50'



OSWEGO COUNTY

- 1
A1 PURCHASE POWER 200 AMPS - 2" SCHEDULE 40 PVC
- 2
A1 GENERATOR POWER - 2" SCHEDULE 40 PVC
- 3
A1 GENERATOR SIGNALING - 1" SCHEDULE 40 PVC
- 4
A1 GENERATOR SIGNALING - 1" SCHEDULE 40 PVC
- 5
A1 GENERATOR SIGNALING - 1" SCHEDULE 40 PVC
- 11
A1 TELCO - 1" SCHEDULE 40 PVC

THE VENDOR WILL PROVIDE FOR THE TRENCHING AND PLACEMENT OF THREE, (1) INCH AND TWO, THREE (3) INCH SCH-40 PVC CONDUITS FROM THE SHELTER UTILITY DEMARCATION POINT TO THE FOLLOWING. A SINGLE (3) INCH CONDUIT WILL TERMINATE AT THE VENDOR PROVIDED ELECTRICAL METER HUB RISER. THE REMAINING CONDUITS WILL TERMINATE BETWEEN THE SHELTER UTILITY DEMARCATION POINT AND THE GENERATOR FOUNDATION STUB-UP POINT. ALL PVC CONDUITS WILL CONFORM TO NEC AND APPLICABLE CODES; CONDUIT ABOVE 24" DEPTH GRADE SHALL BE SCHEDULE 80.

ONLY SWEEPS WILL BE USED WHEN/WHERE NINETY (90) DEGREE ANGLES MUST BE MADE. EACH CONDUIT WILL BE PROVISIONED WITH TWO PULL LINES CAPABLE OF PULLING ELECTRICAL AND OR COMMUNICATIONS WIRE BETWEEN THE END POINTS. REFERENCE MAY BE MADE TO THE ATTACHED "TYPICAL" SITE PLAN. AT THE GENERATOR PAD, STUB-UPS WILL BE TEN (10) INCHES ABOVE TOP OF PAD SURFACE.

VENDOR SHALL HAVE INSTALLED BY A QUALIFIED ELECTRICIAN FOLLOWING; ALL PER NEC, UL, AND LOCAL CODES: A 120/240, 200 AMP SERVICE BETWEEN THE ELECTRICAL UTILITY DEMARCATION POINT/METER HUB AND THE 200 AMP TRANSTECTOR TRANSFER PANEL LOCATED INSIDE THE COUNTY PROVIDED COMMUNICATIONS SHELTER.

AT A POINT OF ~3-FT INSIDE THE COMPOUND FENCE THE VENDOR WILL INSTALL A FOUR (4) METER HUB CABINET USING TWO EA. 3-IN SCH-40 GALVANIZED PIPE RISERS, THESE RISERS WILL BE SET IN MINIMUM 2500-PSI CONCRETE TO A DEPTH OF THREE (3) FEET, AND MINIMUM 12-IN DIA. FOUNDATIONS. THE METER(S) SHALL BE VISUAL FROM OUTSIDE THE FENCE. THREE OF THE METER SOCKETS WILL BE COVERED FOR FUTURE USE.

THE VENDOR'S ELECTRICIAN WILL BE RESPONSIBLE FOR THE COMPLETE INSTALLATION INCLUDING TRENCHING OF BURIED SERVICE PER THE ELECTRICAL UTILITY COMPANY SERVING THE SITE LOCATION.

ALL CONDUIT WILL TERMINATE IN A PRE-INSTALLED PULL BOX MOUNTED ON THE SHELTER. A 200 AMP DISCONNECT WILL BE PROVIDED AND INSTALLED AT THE ELECTRICAL UTILITY DEMARCATION/METER LOCATION. THE VENDOR WILL ALSO HAVE INSTALLED BETWEEN THE 50kW GENERATOR AND THE SHELTER A 200 AMP SERVICE TERMINATED TO THE TRANSTECTOR TRANSFER PANEL (ATS) EMERGENCY POWER BUSS. VENDOR SHALL INSTALL A 120 VAC, 20 AMP SERVICE BETWEEN THE TRANSTECTOR SERVICE PANEL AND THE GENERATOR TO SERVICE THE JACKET WATER HEATER AND BATTERY CHARGING UNIT.

THE THREE (3) INCH CONDUIT INSTALLED BETWEEN THE GENERATOR AND THE SHELTER SHALL BE USED TO PROVISION THE GENERATOR BACKUP ELECTRICAL SERVICE TO THE SHELTER ATS. THE FIRST 1-INCH CONDUIT SHALL BE USED TO PROVISION THE 20-AMP 120VAC CIRCUIT FOR THE GENERATORS CHARGER/HEATER, THE SECOND 1-INCH CONDUIT SHALL BE USED TO PROVISION THE GENERATORS CONTROL WIRING, THE THIRD 1-INCH CONDUIT SHALL BE USED TO PROVISION THE GENERATOR ALARM WIRING, AND SHALL BE INSTALLED BETWEEN THE GENERATOR LOCAL CONTROL PANEL, TO THE ALARM ANNUNCIATION PANEL INSIDE THE SHELTER. THE VENDOR WILL PROVIDE THE ALARM CABLING; RAYCHEM WIRE & CABLE, CHEMINAX REMOTE ANNUNCIATOR CABLE Pt. No. 2019D0309-0 (OR APPROVED EQUAL).

THE VENDOR WILL PROVIDE ALL END TO END CONNECTIVITY BETWEEN THE SHELTER AND THE PROVIDED UTILITY ELECTRICAL DEMARK, AND ALL CONNECTIVITY BETWEEN THE SHELTER AND THE 50-KW GENERATOR. THE GENERATOR WILL BE PROVIDED AND SET BY OTHERS. ONCE THE GENERATOR IS IN PLACE THE VENDOR SHALL (USING 3/4", Pt. No. LAGSHIELD750LONG; USS FLAT WASHER, GR 2, HDG 3/4" WUSSGR2012-000HDG; AND HEX LAG SCREW, GR 2, ZINC 3/4" X 3", Pt No. HLAGGR2012C056ZN) SECURE THE GENERATOR TO THE CONCRETE PAD USING THREE LAG SCREWS END – MIDDLE – END ALONG EACH SIDE OF THE GENERATOR FUEL TANK RAIL.

LANGONE & ASSOCIATES

87 EMERALD COURT
TEWKSBURY, MASSACHUSETTS 01876
(978) 851-0198

DRAWN BY: SEAN M. SPARKS

CUSTOMER:

OSWEGO COUNTY
DEPARTMENT OF EMERGENCY
COMMUNICATIONS

INTEROPERABLE COMMUNICATIONS
PROJECT
APPENDIX 1

NAME	GENERIC SITE PLAN
DATE:	APRIL 12, 2010
SITE DATA:	GENERIC 200' SS
SCALE:	1/8" = 1'
PAGE SIZE:	11" x 17"
SHEET:	3 OF 8
SHEET DATA	UTILITY NOTES
DRAWING #:	2010-0001

REVISION HISTORY:

APRIL 19, 2010	ADD UTILITY NOTES

--	--

LANGONE & ASSOCIATES

87 EMERALD COURT
TEWKSBURY, MASSACHUSETTS 01876
(978) 851-0198

DRAWN BY: SEAN M. SPARKS

CUSTOMER:

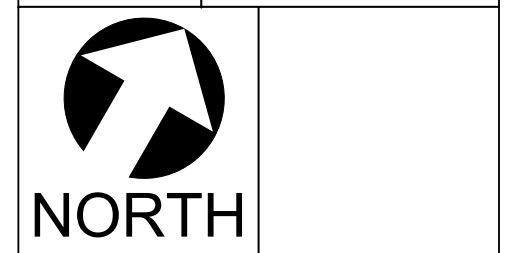
OSWEGO COUNTY
DEPARTMENT OF EMERGENCY
COMMUNICATIONS

**INTEROPERABLE COMMUNICATIONS
PROJECT
APPENDIX 1**

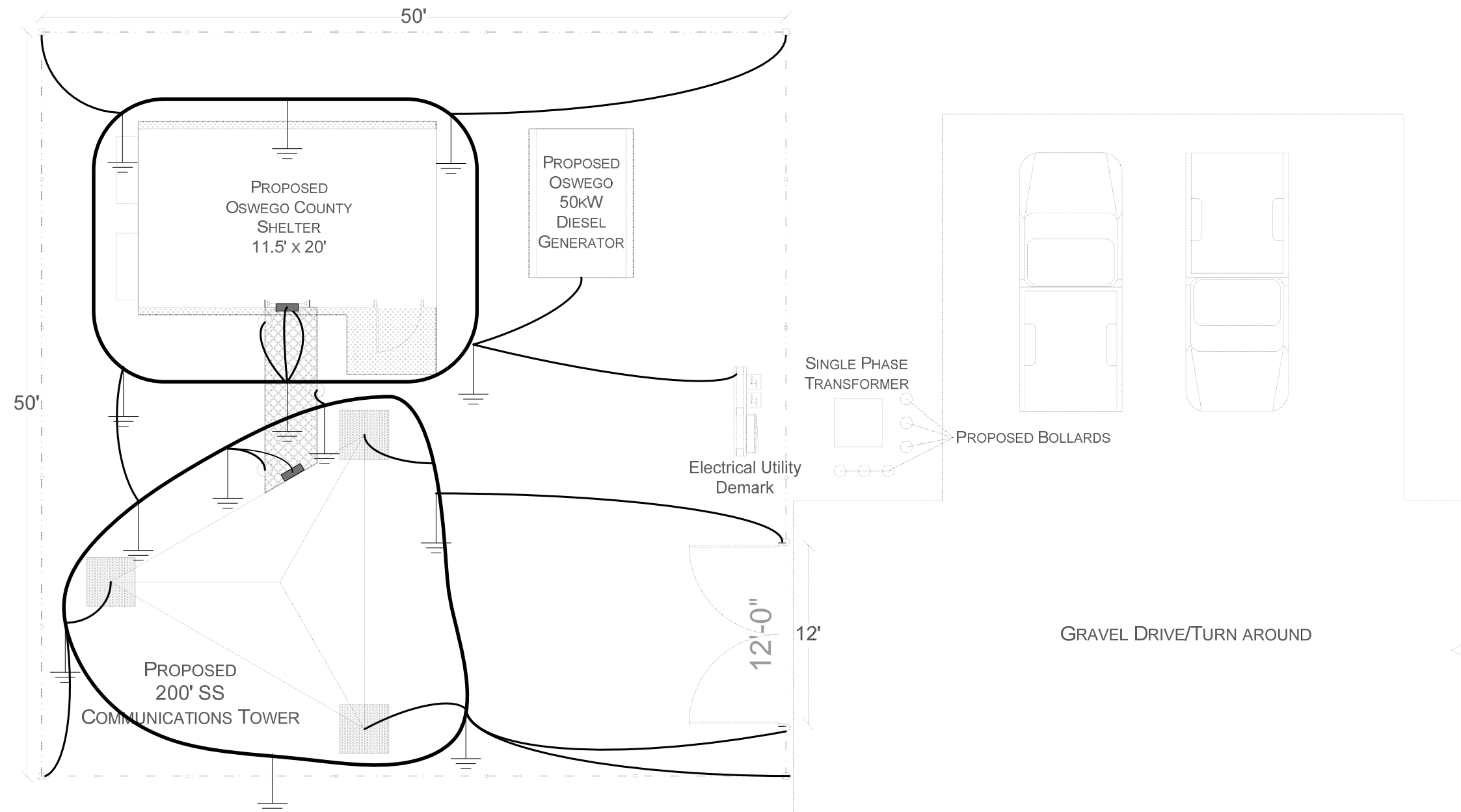
NAME	GENERIC SITE PLAN
DATE:	APRIL 12, 2010
SITE DATA:	GENERIC 200' SS
SCALE:	1/8" = 1'
PAGE SIZE:	11" x 17"
SHEET:	4 OF 8
SHEET DATA	GROUNDING DETAIL
DRAWING #:	2010-0001

REVISION HISTORY:

APRIL 19, 2010	ADD GROUNDING DETAIL



FENCED COMPOUND SIZE
50' x 50'



ALL GROUNDING, MATERIAL, CONNECTIONS AND PLACEMENT SHALL BE PER
MOTOROLA R-56 STANDARD 2005, INCLUDING REVISIONS, IF ANY.

· ALL GROUNDING SHALL MEET CURRENT MOTOROLA R-56 STANDARDS (REV. 9/05).

· THE TOWER ONCE INSTALLED, SHALL BE GROUNDED FROM EACH OF THE TOWERS THREE LEGS TO A HALO GROUND RING. GROUND WIRE ATTACHMENT WILL BE VIA A STEEL TAB WELDED AND MADE A PART OF THE BASE FLANGE OF EACH TOWER LEG. ALL BONDING TO THE TOWER TAB AND GROUND RODS AND ANY INTEGRATED SPLICES WILL BE BY EXOTHERMIC BONDING ONLY. NO BONDING DIRECTLY TO THE TOWER LEG IS PERMITTED.

· A HALO GROUND WILL ALSO BE INSTALLED AROUND THE COMMUNICATIONS SHELTER FOUNDATION AND GENERATOR FOUNDATION AND BONDED TO THE TOWER HALO. ONLY "TINNED COPPER" GROUND WIRES PER MOTOROLA R-56 STANDARD WILL BE PROVIDED FOR FINAL CONNECTION TO THE SHELTER BUSS BAR AND GENERATOR GROUNDING POINT AS DIRECTED BY THE NETWORK COMMUNICATIONS INFRASTRUCTURE ADMINISTRATOR FOR FINAL ATTACHMENT BY THE VENDOR AT THE INSTALLATION OF BOTH THE SHELTER AND GENERATOR. ALL FOUR CHAIN LINK FENCE CORNER POSTS AND GATE POSTS SHALL BE BONDED TO THE HALO GROUND.

· GROUNDING SYSTEM IS TO ADHERE TO MOTOROLA R-56 STANDARDS FOR FIXED NETWORK EQUIPMENT - TOWER SITES OR EQUAL. THE GROUND SYSTEM SHALL CONNECT TO THE EQUIPMENT SHELTERS SINGLE POINT GROUND SYSTEM ACCORDING TO THE MOST RECENT R-56 STANDARDS. AFTER THE GROUNDING SYSTEM IS INSTALLED, THE VENDOR SHALL PERFORM AND RECORD GROUND SYSTEM TESTING USING ONE OF THREE METHODS: THREE-POINT/FALL-OF-POTENTIAL TESTING, CLAMP-ON OHMMETER, COMBINED SOIL RESISTIVELY TESTING WITH CLAMP-ON OHMMETER TESTING

· A GROUNDING BUSS BAR SHALL BE PROVIDED AT THE POINT ON THE TOWER WHERE THE COAX TRANSITIONS TO ATTACH TO THE WAVEGUIDE-BRIDGE. BUSS BAR WILL BE ATTACHED TO THE TOWER GROUNDING RING BY TINNED 2/0 SOLID COPPER.

LANGONE & ASSOCIATES

87 EMERALD COURT
TEWKSBURY, MASSACHUSETTS 01876
(978) 851-0198

DRAWN BY: SEAN M. SPARKS

CUSTOMER:

OSWEGO COUNTY
DEPARTMENT OF EMERGENCY
COMMUNICATIONS

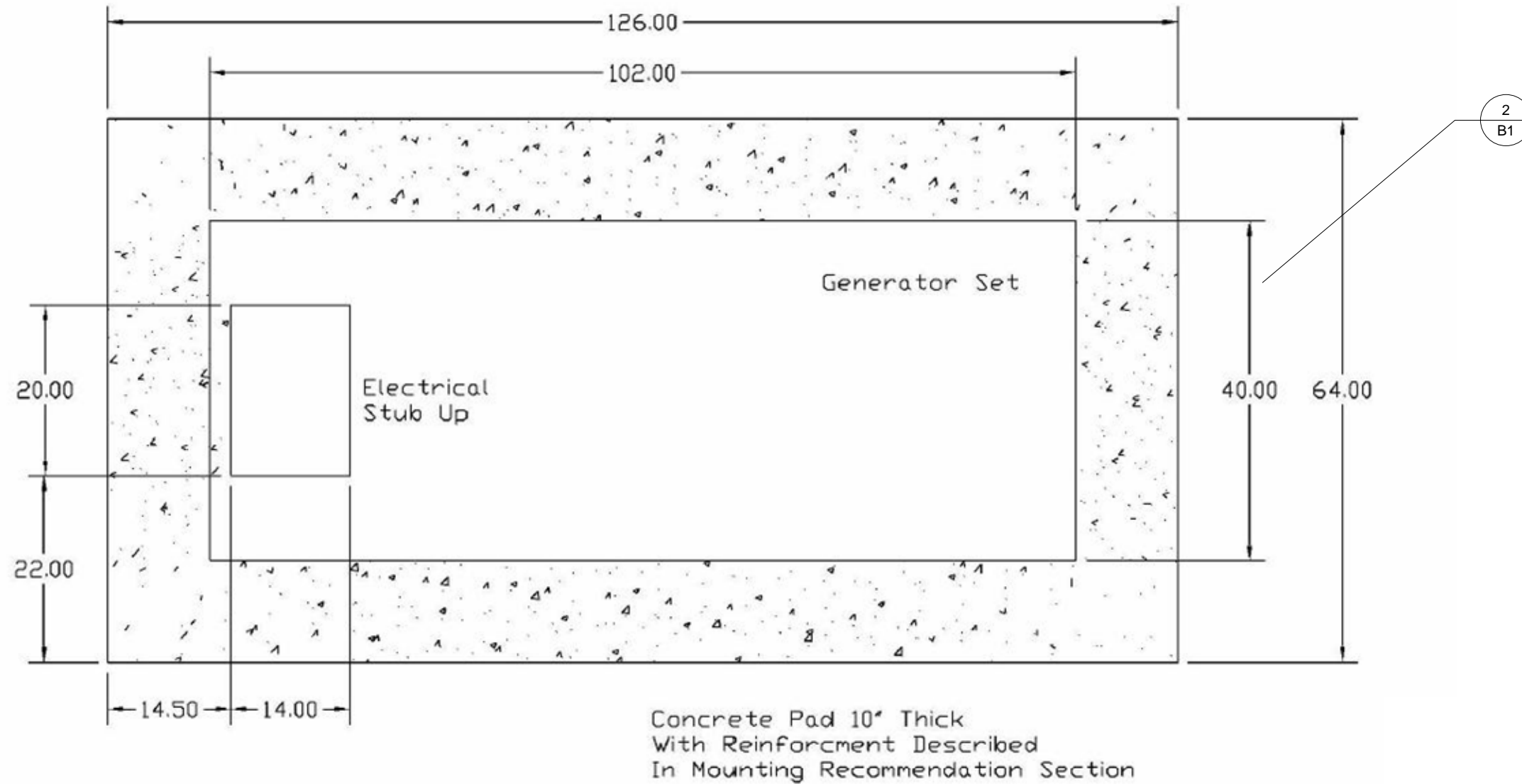
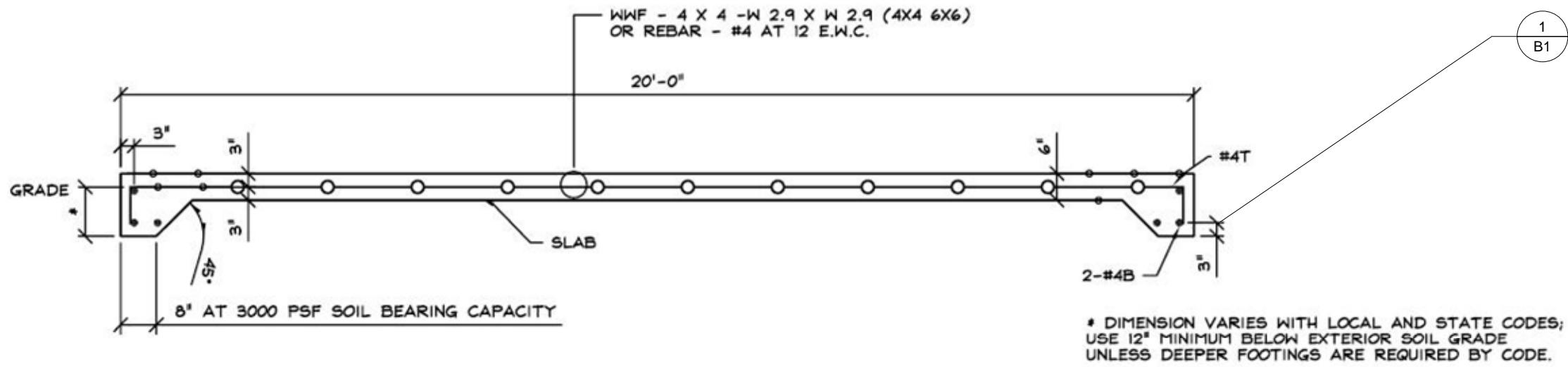
INTEROPERABLE COMMUNICATIONS
PROJECT
APPENDIX 1

NAME	GENERIC SITE PLAN
DATE:	APRIL 12, 2010
SITE DATA:	GENERIC 200' SS
SCALE:	1/8" = 1'
PAGE SIZE:	11" x 17"
SHEET:	5 OF 8
SHEET DATA	GROUNDING NOTES
DRAWING #:	2010-0001

REVISION HISTORY:

APRIL 19, 2010	ADD GROUNDING NOTES

--	--



LANGONE & ASSOCIATES

87 EMERALD COURT
TEWKSBURY, MASSACHUSETTS 01876
(978) 851-0198

DRAWN BY: SEAN M. SPARKS

CUSTOMER:

OSWEGO COUNTY
DEPARTMENT OF EMERGENCY
COMMUNICATIONS

INTEROPERABLE COMMUNICATIONS
PROJECT
APPENDIX 1

NAME	GENERIC SITE PLAN
DATE:	APRIL 12, 2010
SITE DATA:	GENERIC 200' SS
SCALE:	NOT TO SCALE
PAGE SIZE:	11" x 17"
SHEET:	6 OF 8
SHEET DATA	FOUNDATIONS
DRAWING #:	2010-0001

REVISION HISTORY:

APRIL 19, 2010	ADD FOUNDATIONS

1-B1 SHELTER FOUNDATION

2-B1 GENERATOR FOUNDATION

